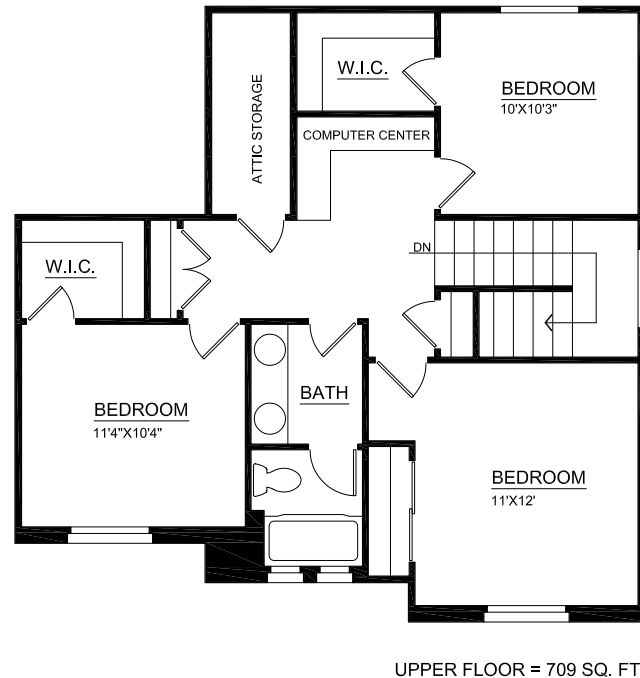
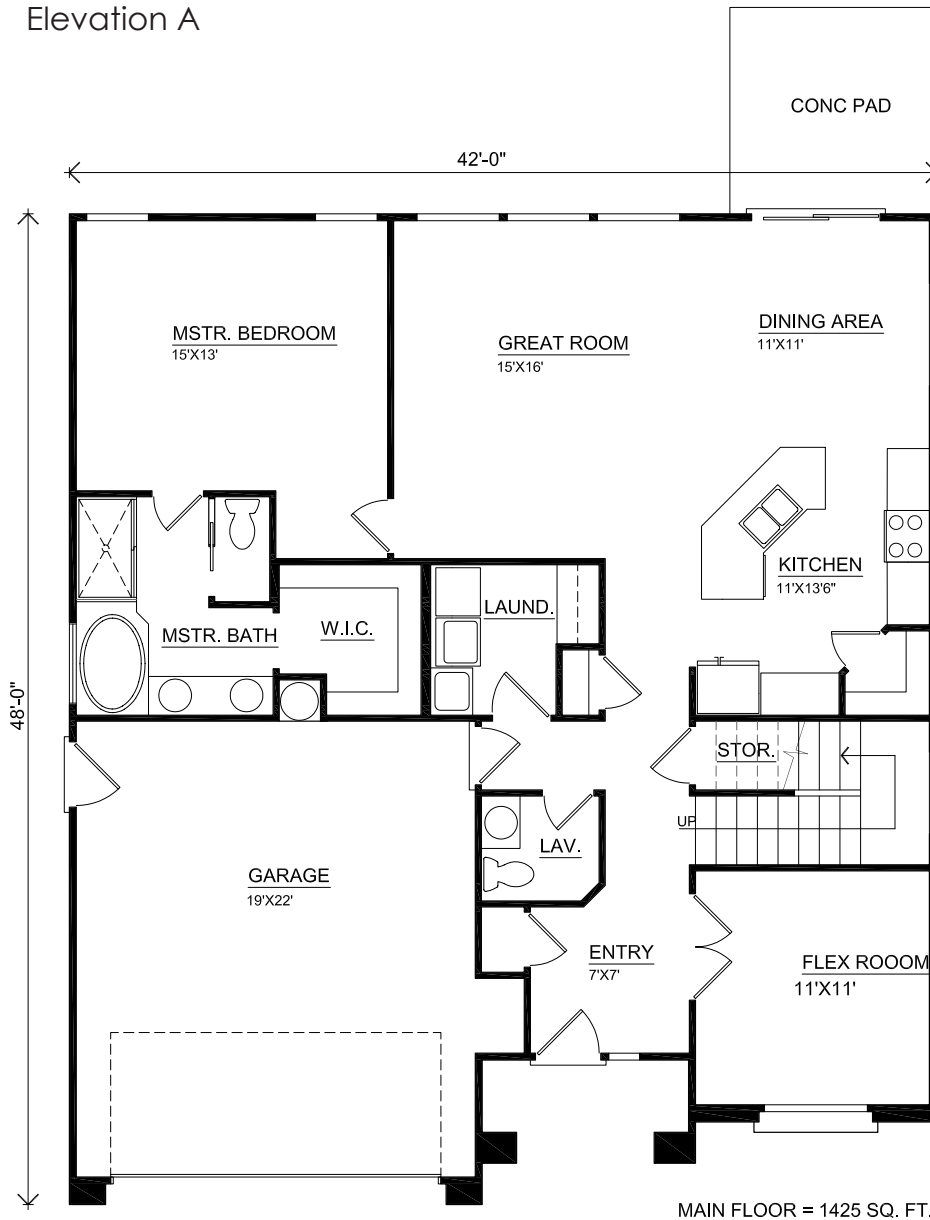




Elevation A

- 2,134 Total S.F.
- 4 Bedroom + Flex Room
- 2.5 Bathroom
- 2 or 3 Car Garage\*
- Study Area Upstairs
- Attic Storage



# TAMARISK



TAMARISK ELEVATION OPT "B"



TAMARISK ELEVATION OPT "C"

PERRY REALTY, INC.

Sales Team

(435) 251-9818

[www.PerryHomesSouthernUtah.com](http://www.PerryHomesSouthernUtah.com)

PERRY  HOMES

Some items shown are optional. At Perry Homes, continuing product improvement is an important policy. The Builder reserves the right to change plans, materials and policies without prior notice. Keep in mind that many items which you see in our model are decorator items only.

Homes are being marketed by Perry Realty, Inc. Copyright by Perry Homes Inc. No reproduction or other use of these plans may be made without the express written consent of the copyright holder.