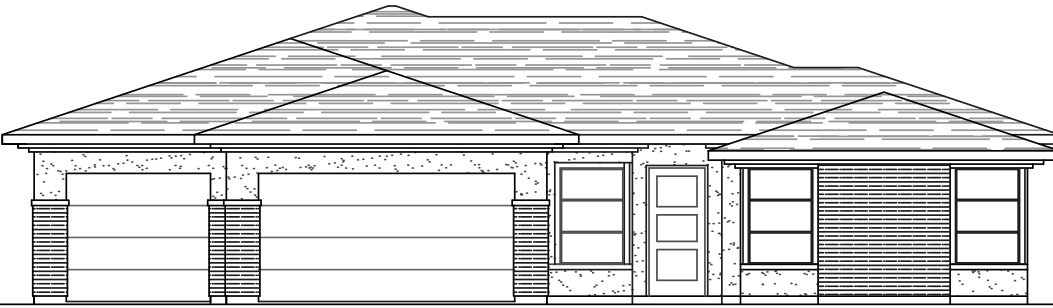


Sage Modern

PLAN FEATURES

- 2,751 Total S.F.
- 3 Bedroom + Flex
- 3 Bathroom
- 3 Car Garage
- 2nd Master Bedroom



PERRY HOMES



AREA TOTALS

LIVING AREA	2,751 SQ FT
GARAGE	763 SQ FT
TOTAL AREA	3,514 SQ FT

PERRY REALTY

Sales Team
(435) 251-9818

www.PerryHomesSouthernUtah.com

Some items shown are optional. At Perry Homes, continuing product improvement is an important policy. The Builder reserves the right to change plans, materials and policies without prior notice. Keep in mind that many items which you see in our model are decorator items only.

Homes are being marketed by Perry Realty, Inc. Copyright by Perry Homes Inc. No reproduction or other use of these plans may be made without the express written consent of the copyright holder. 10/20/2020